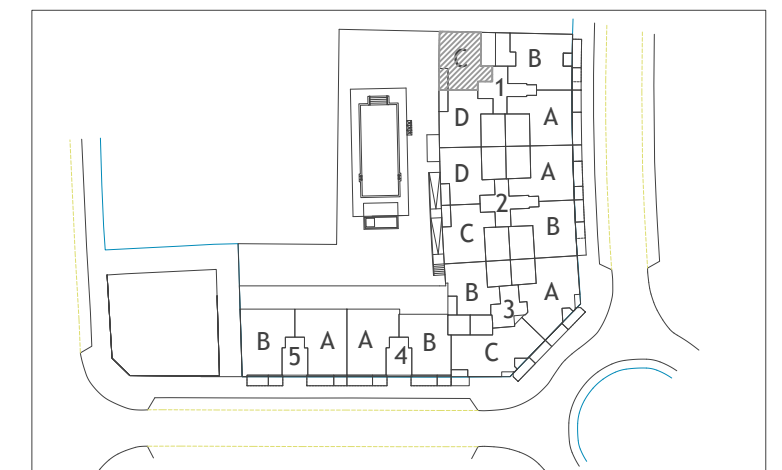
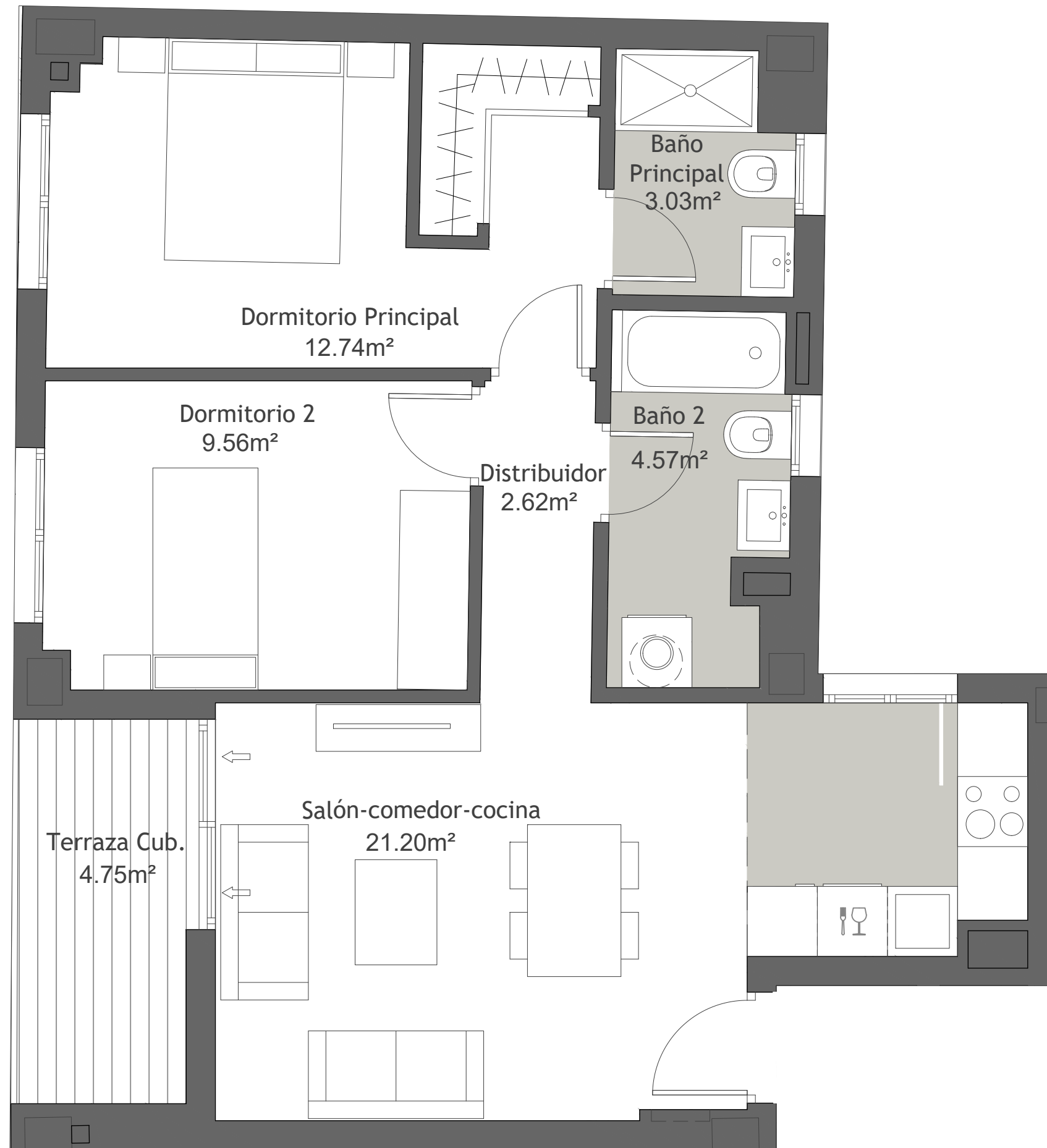




PORTAL - 1
PLANTA - TERCERA
LETRA - C

| | |
|-----------------------------------|----------------------|
| Útil interior + Terraza útil | 58.47 m ² |
| Const. inter.+Z.C.+Terraza const. | 80.06 m ² |
| Construida Patio / Solarium | ----- m ² |



ESCALA GRAFICA:



**PARCELAS SUP-VM7
SECTOR SUP-VM7
ENSANCHE I
VÉLEZ MÁLAGA**

