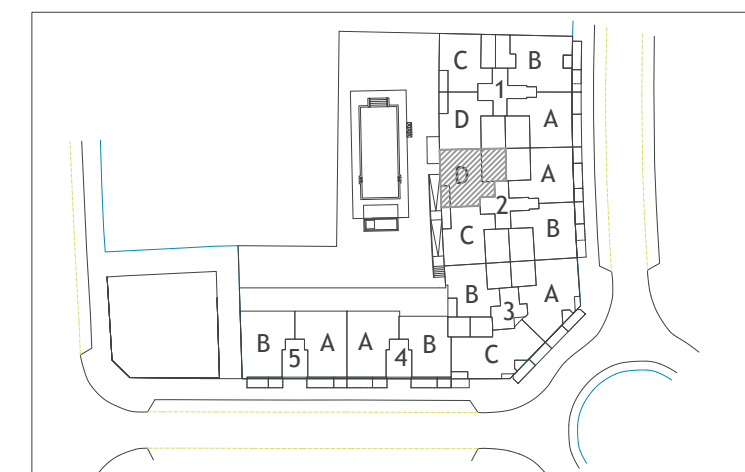


**PORTAL - 2  
PLANTA - PRIMERA  
LETRA - D**

Útil interior + Terraza útil	59.35 m <sup>2</sup>
Const. inter.+Z.C.+Terraza const.	79.51 m <sup>2</sup>
Construida Patio / Solarium	21.75 m <sup>2</sup>



ESCALA GRAFICA:



**PARCELAS SUP-VM7  
SECTOR SUP-VM7  
ENSANCHE I  
VÉLEZ MÁLAGA**

