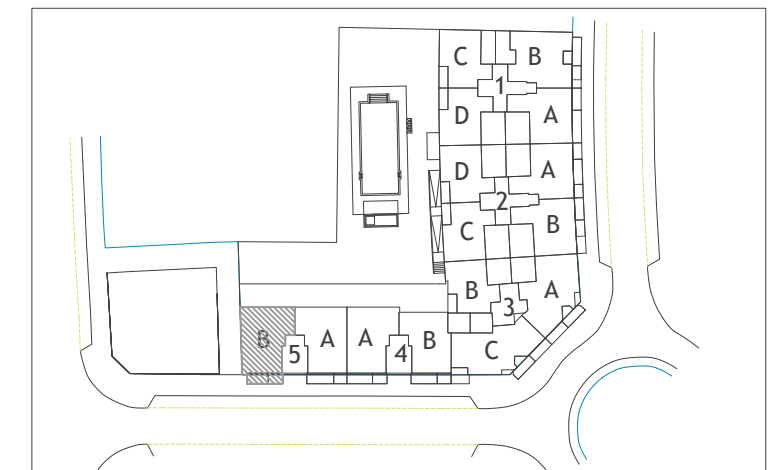


**PORTAL - 5**  
**PLANTA - PRIMERA**  
**LETRA - B**

Útil interior + Terraza útil	72.59 m <sup>2</sup>
Const. inter.+Z.C.+Terraza const.	110.42 m <sup>2</sup>
Construida Patio / Solarium	----- m <sup>2</sup>



ESCALA GRAFICA:



**PARCELAS SUP-VM7**  
**SECTOR SUP-VM7**  
**ENSANCHE I**  
**VÉLEZ MÁLAGA**

